



MONTHLY MEMBERSHIP PROGRESS REPORT

District 1 CN

Results as of: 12/31/2018

GMT: STEVE ANTON

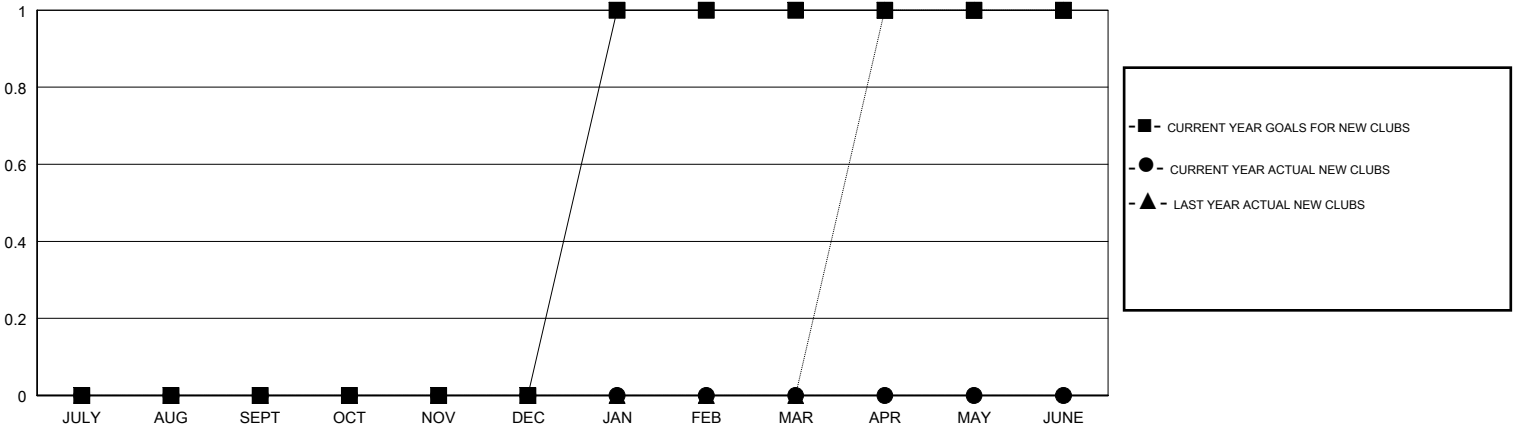
LOCATION ILLINOIS

GMT CA

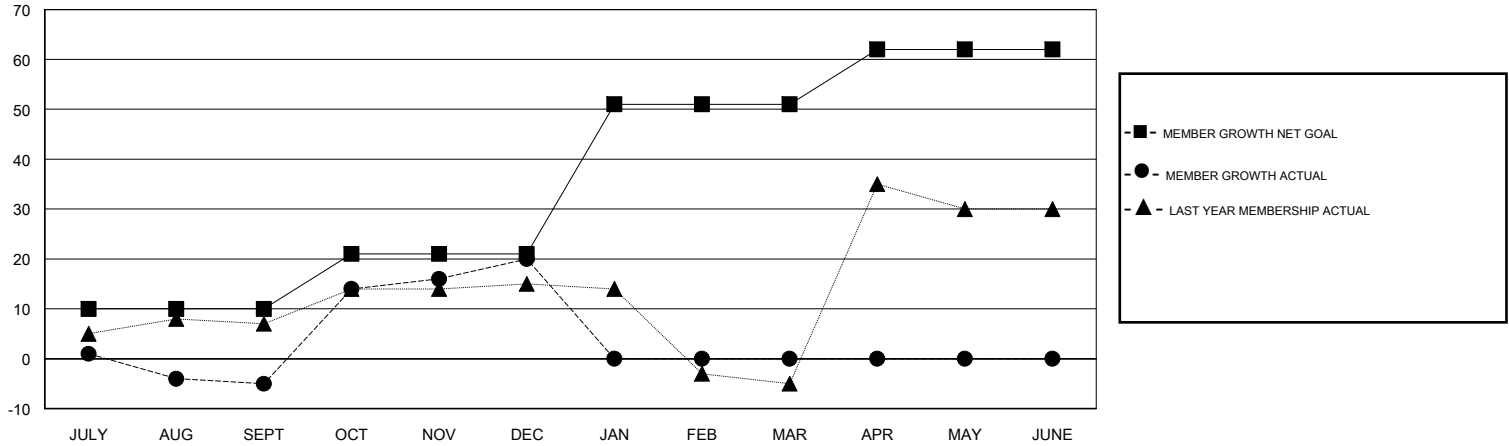
Clubs			
RESULTS FOR 2018-2019			
QUARTER	NEW CLUB GOAL	NEW CLUBS	DROPPED CLUBS
JULY/AUG/SEPT	0	0	0
OCT/NOV/DEC	0	0	0
JAN/FEB/MAR	1	0	0
APR/MAY/JUNE	0	0	0

Members			
RESULTS FOR 2018-2019			
QUARTER	MEMBER GROWTH NET GOAL	MEMBER GROWTH ACTUAL	DROPPED MEMBERS ACTUAL (including transfers)
JULY/AUG/SEPT	10	15	20
OCT/NOV/DEC	11	46	20
JAN/FEB/MAR	30	0	0
APR/MAY/JUNE	11	0	0

GOALS AND ACTUAL NEW CLUBS CUMULATIVE



GOALS AND ACTUAL MEMBERS CUMULATIVE



DROPPED CLUBS: 0	17 CLUBS OF 33 ADDED 1 OR MORE NEW MEMBERS	<u>GENDER DISTRIBUTION</u>	
DROPPED MEMBERS		MALE	730 (75.57%)
DECEASED	7	FEMALE	236 (24.43%)
CLUB CANCELLED	0	Women Percentage Fiscal Year Goal: 25%	
OTHER	33	TOTAL FAMILY UNIT MEMBERS	
TOTAL	40	103	
CLICK HERE FOR CUMULATIVE MEMBERSHIP DATA		FAMILY MEMBERS PAYING HALF DUES	
		52	